

6040-DV X-RAY INSPECTION

Explosives, Weapons and Contraband



DUAL-VIEW, MULTI-ENERGY

X-RAY INSPECTION



The 6040-DV multi-energy X-ray scanner delivers a clear picture of hidden explosives, weapons, drugs and other contraband in hand-carried and small-to mid-sized items. This dual-view system displays two separate, perpendicular X-ray images to provide a complete inspection in a single scan. Our autoSoft operating system gives a bold boost to our suite of image enhancement tools, allowing operators to more quickly and easily manipulate image data for the best possible picture of concealed threats.

- > Dual-view design provides more detailed information in one scan
- > Folded array rapidly images full mailbags and long or tall items
- > Fits in elevators, narrow halls and tight spaces
- > Built on the industry's most stable and flexible operating system

APPLICATIONS:

- > Cargo Screening
- > Passenger, Staff and Visitor Checkpoint Inspection
- > Corporate, Government and Private Security
- > Critical Infrastructure Security
- > Mail Screening

6040-DV SPECIFICATIONS

X-RAY INSPECTION

PHYSICAL DETAILS

Tunnel Size:	62.0 x 42.0 cm 24.4 x 16.5 in. (W x H)
Dimensions:	184.9 x 118.6 x 126.5 cm 72.8 x 46.7 x 49.8 in. (L x W x H)
Weight:	352 kg (1,025 lbs.) uncrated 442 kg (1,275 lbs.) crated
Construction:	Unibody heavy gauge epoxy painted steel construction with stainless steel and aluminum trim and accessories; non-marking casters
Temperature:	0° to 40°C (32° to 104°F)
Humidity:	20% to 95%, non-condensing
Storage:	To 65°C (149°F)
Power Consumption:	< 0.9 kVA; < 8 amps 100, 120 volts AC +10%; < 4 amps 200, 220, 240, 250 volts AC ±10%; all at 50 or 60 Hz

X-RAY GENERATOR

X-ray Tube Head:	Self-contained, shielded tank
High Voltage Rating:	160 kV
Duty Cycle:	100% with sealed oil bath cooling
Beam Orientation:	Diagonal (80° beam divergence)
Dose Per Exam:	0.1 mR

INSPECTION CAPABILITIES

Material Penetration:	28 mm (1.10 in.) steel
Contrast Sensitivity:	Over 2 million color tones standard
Resolution:	38–40 AWG wire
Processing:	32-bit adaptive image processing with minimum 1 Gbytes+ memory; 2.2GHz+ dual core processor; video processing using next generation graphical processing unit architecture with 550MHz+ GPU clock, 512Mbyte+ video memory and 32+ stream processing cores
Conveyor Speed:	24.0 cm (9.4 in.) per second 13.71 m (45.0 ft.) per minute
Pulling Weight:	100 kg (221 lbs.)
Film Safety:	Guaranteed for high-speed film up to ISO 1600 (33 DIN)

DETECTORS

L-shaped detector for 100% object screening

Surface mounted, multilayer, fully integrated, high frequency solid state detectors using high speed processors and Pentium 4 image processing

VIDEO

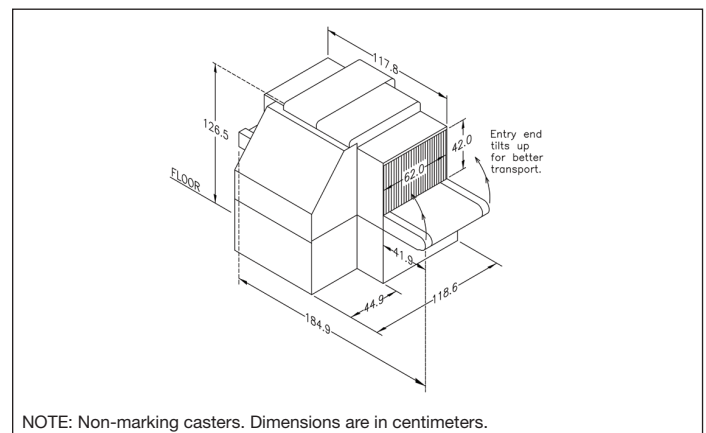
Two color 19" monitors, 1280 x 1024 video card

STANDARD FEATURES

- autoSoft operating system
- Full-size operator control panel (OCP) with touchpad navigation
- autoTracking guided conveyor belt system
- Reversible conveyor direction
- High/low density and stripping
- Organic/inorganic stripping
- Color; reverse B/W imaging
- Interactive, user-friendly help screens
- 128x Smart Zoom
- D-SCAN
- Dark and light enhance
- RealClear
- autoDensAlert
- autoOutline
- autoSensing
- autoScale
- autoCal
- Z-SCAN
- Save screen to USB
- autoImage recall (10 images)
- Adjustable zoom preview window

OPTIONS

- Loading or exit rollerbeds
- Tropical humidity kit
- DVD drive
- autoMatAlert
- autoZ display
- Image archiving
- Threat image projection (TIP)
- Built-in training
- Level 1, 2 and 3 networking
- User management
- Item counter
- autoArchive
- Locking metal OCP cover
- Variable height OCP mount
- Larger monitors
- Locking monitor garage
- Laser printer
- Console desk
- kV, mA meter
- Power conditioner, or UPS
- Optical X-ray on/off sensor
- Footpad
- STI Viewer software for archived image analysis
- Remote operation



NOTE: Non-marking casters. Dimensions are in centimeters.