

6848 X-RAY INSPECTION

Explosives, Weapons and Contraband



SINGLE SOURCE, MULTI-ENERGY

X-RAY INSPECTION



The high-capacity 6848 is designed for inspecting medium-sized baggage, briefcases, parcels and other hand carried items. The unit's 160 kV X-ray generator can penetrate 28 mm (1 in.) of steel, and the L-shaped detector design ensures that objects are scanned in their entirety. The 6848 is equipped with a full suite of intuitive imaging tools that give operators an edge when screening for weapons, explosives or contraband.

- > Quickly images long or tall items
- > Bottom-up generator design enhances fine lines on screen
- > Patented guided conveyor belt never needs adjusting
- > Built on the industry's most stable and flexible operating system

APPLICATIONS:

- > Airports
- > Customs
- > Government Buildings
- > Critical Infrastructure
- > Special Events
- > Loading Docks

6848 SPECIFICATIONS

X-RAY INSPECTION

PHYSICAL DETAILS

Tunnel Size:	68.0 x 48.0 cm 26.8 x 18.9 in. (W x H)
Dimensions:	185.4 x 88.1 x 132.7 cm 73.0 x 34.7 x 52.3 in. (L x W x H)
Weight:	403 kg (890 lbs.) uncrated 517 kg (1,150 lbs.) crated
Construction:	Unibody heavy gauge epoxy painted steel construction with stainless steel and aluminum trim and accessories; non-marking casters
Temperature:	0° to 40°C (32° to 104°F)
Humidity:	20% to 95%, non-condensing
Storage:	To 65°C (149°F)
Power Consumption:	< 0.6 kVA; < 6 amps 100, 120 volts AC +10%; < 3 amps 200, 220, 230, 240, 250 volts AC +10%; all at 50 or 60 Hz

X-RAY GENERATOR

X-ray Tube Head:	Self-contained, shielded tank
High Voltage Rating:	160 kV
Duty Cycle:	100% with sealed oil bath cooling
Beam Orientation:	Diagonal (80° beam divergence)
Dose Per Exam:	0.1 mR

INSPECTION CAPABILITIES

Material Penetration:	28–29 mm (1.10–1.14 in.) steel
Contrast Sensitivity:	Over 2 million color tones standard
Resolution:	40 AWG wire
Processing:	32-bit adaptive image processing with minimum 1 Gbytes+ memory; 2.2GHz+ dual core processor; video processing using next generation graphical processing unit architecture with 550MHz+ GPU clock, 512Mbyte+ video memory and 32+ stream processing cores
Conveyor Speed:	24.0 cm (9.4 in.) per second 14.6 m (48 ft.) per minute
Pulling Weight:	150 kg (331 lbs.)
Film Safety:	Guaranteed for high-speed film up to ISO 1600 (33 DIN)

DETECTORS

L-shaped detector for 100% object screening

Surface mounted, multilayer, fully integrated, high frequency solid state detectors using high speed processors and Pentium 4 image processing

VIDEO

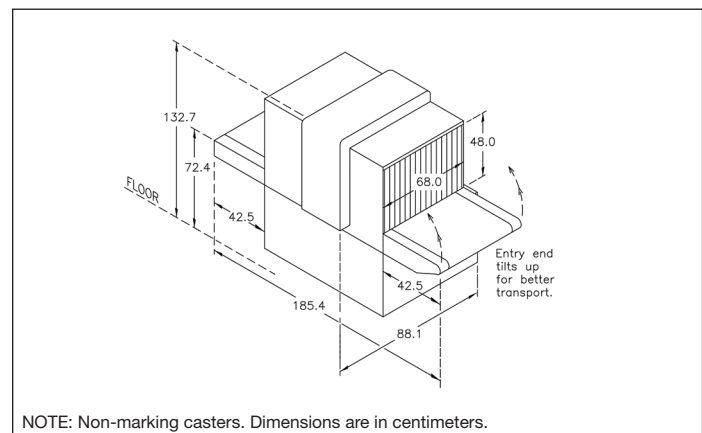
Color 19" monitor, 1280 x 1024 video card

STANDARD FEATURES

- autoSoft operating system
- Full-size operator control panel (OCP) with touchpad navigation
- autoTracking guided conveyor belt system
- Reversible conveyor direction
- High/low density and stripping
- Organic/inorganic stripping
- Color; reverse B/W imaging
- 128x Smart Zoom
- Adjustable zoom preview window
- D-SCAN
- Dark and light enhance
- Save screen to USB
- RealClear
- autoDensAlert
- autoOutline
- autoSensing
- autoScale
- autoCal
- Z-SCAN
- autoImage recall (10 images)
- Interactive, user-friendly help screens

OPTIONS

- Loading or exit rollerbeds
- Conveyor extensions
- Tropical humidity kit
- DVD drive
- autoMatAlert
- autoZ display
- Image archiving (500K)
- Threat image projection (TIP)
- Built-in training
- Level 1, 2 and 3 networking
- Remote operation
- User management
- Item counter
- autoArchive
- Locking metal OCP cover
- Variable height OCP mount
- Dual and larger monitors
- Monitor platform
- Locking monitor garage
- Laser printer
- Console desk
- kV, mA meter
- Power conditioner or UPS
- Optical X-ray on/off sensor
- Footpad
- STI Viewer software for archiving image analysis



NOTE: Non-marking casters. Dimensions are in centimeters.